

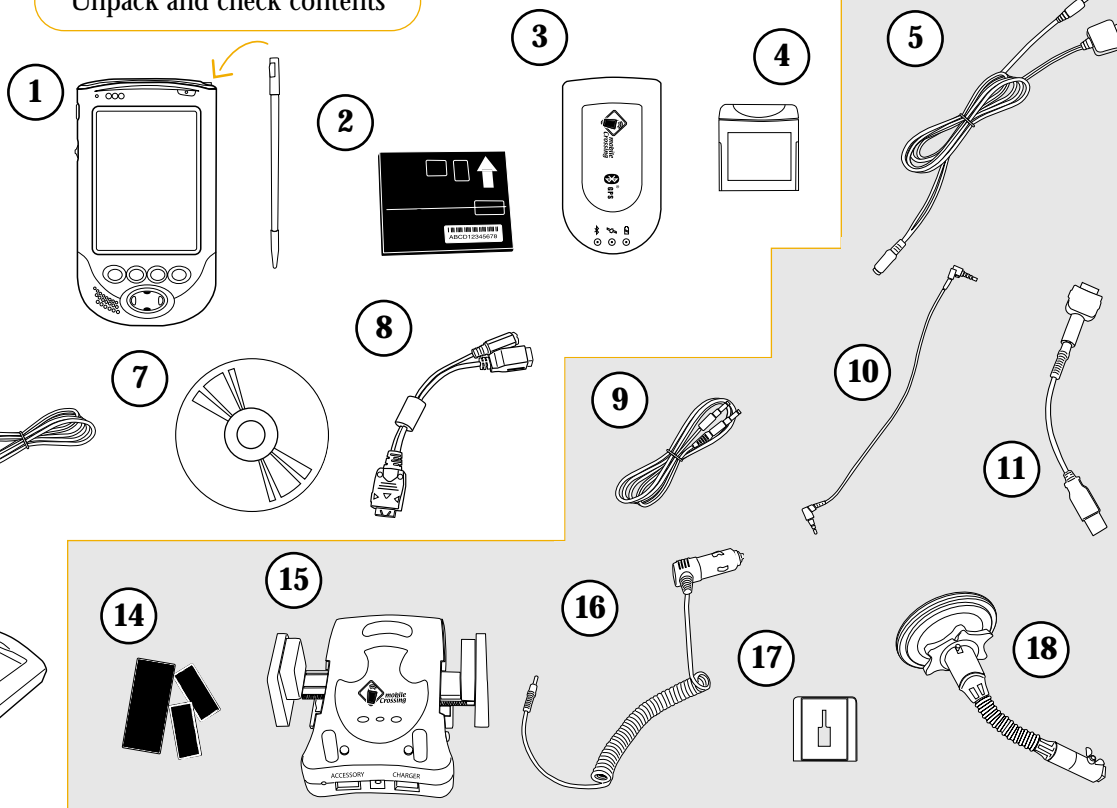
Quick Start Guide WayPoint 200

A Contents

Unpack and check contents

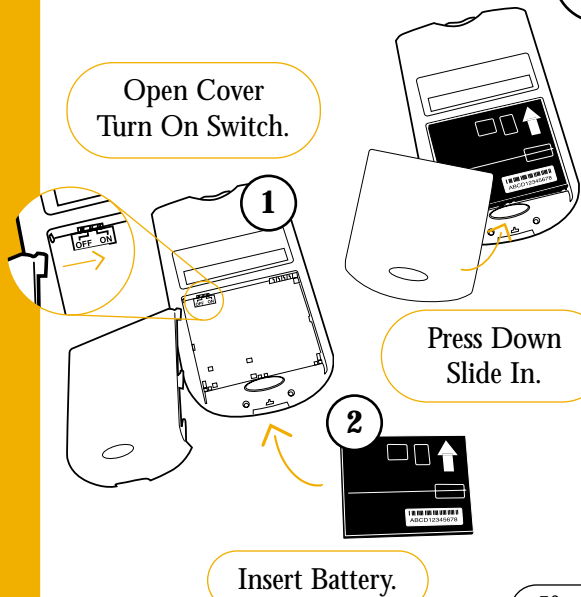
Boxes

1 2



B Getting Started

Open Cover
Turn On Switch.



Press Down
Slide In.

Insert Battery.

If you do not intend to use this unit with a personal computer then skip step D.

C Calibration and Registration

After charging, turn on the WayPoint. (Using the power button on the front, top right of the pda.)

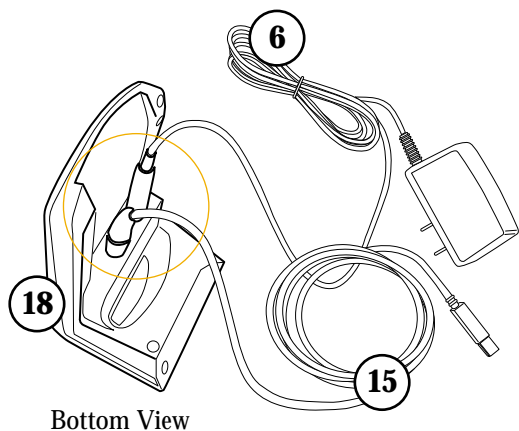
Follow the screen directions to calibrate.

Tap here to set owner information.

Click the keyboard button in the lower right corner of the screen.

D Optional Computer Setup

Optional: When Installing Cradle for Computer Setup (Step D).
Insert cables (4) and (6).

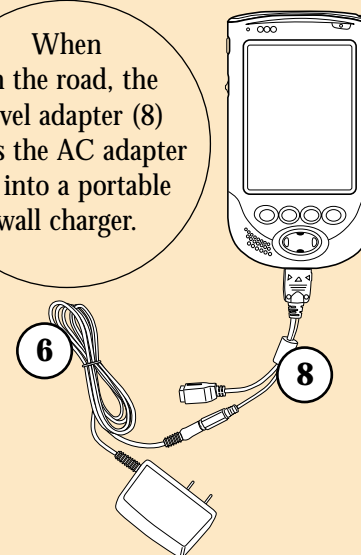


Bottom View

Insert the CD-ROM (9) into a drive on your computer. Follow the instructions on the screen to install OUTLOOK and ActiveSync. Insert the USB cable (15) into a USB slot on your PC.

Travel Tip

When on the road, the travel adapter (8) turns the AC adapter (6) into a portable wall charger.



E Installing your WayPoint in a Car

Connect cigarette lighter plug (14) to lighter socket.

