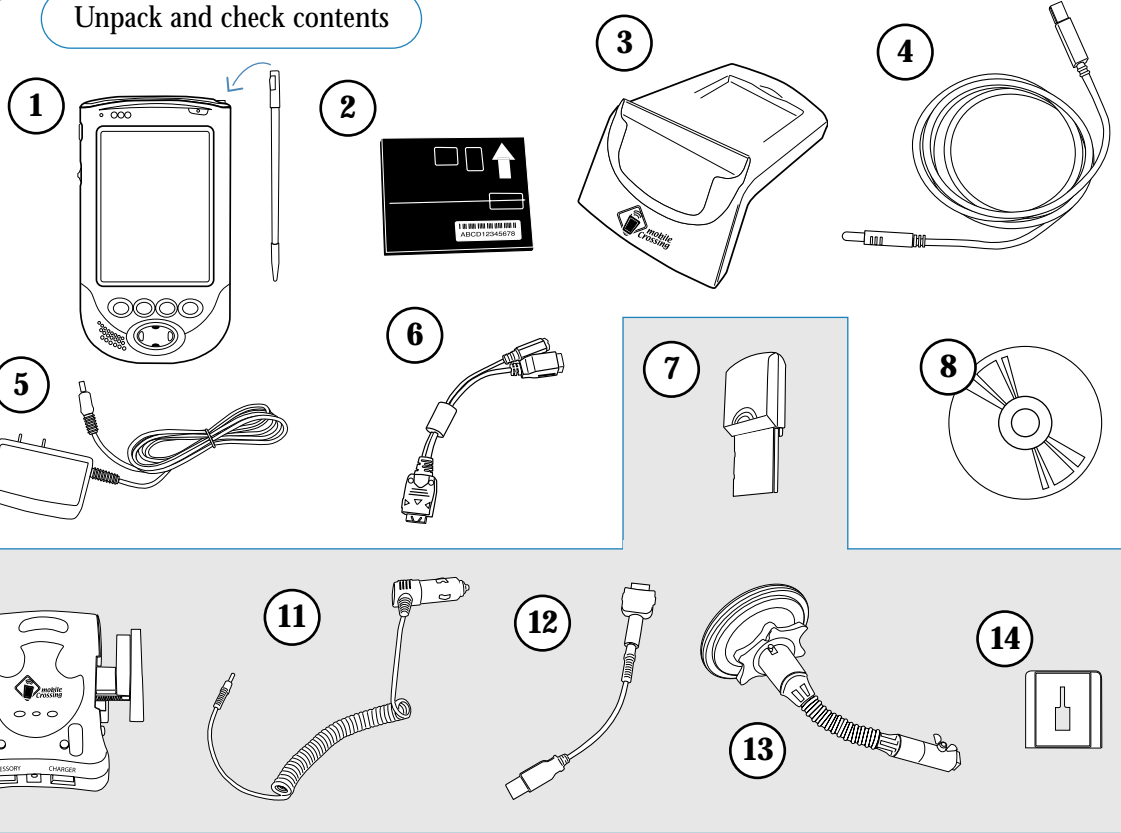


# Quick Start Guide WayPoint 100

## A Contents

Unpack and check contents

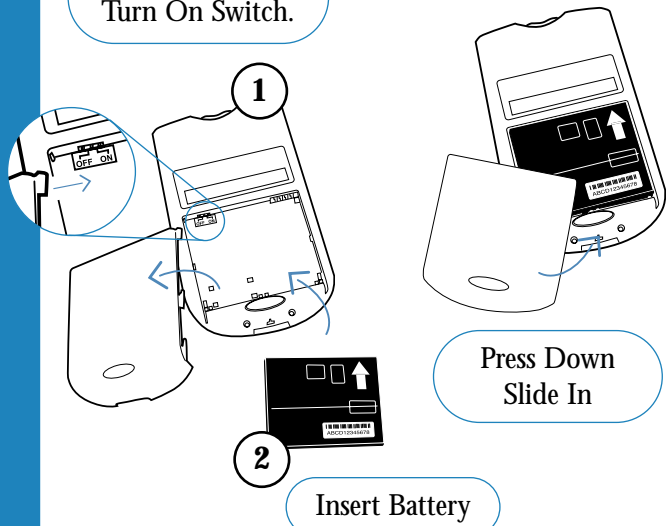


Boxes

1 2

## B Getting Started

Open Cover  
Turn On Switch.

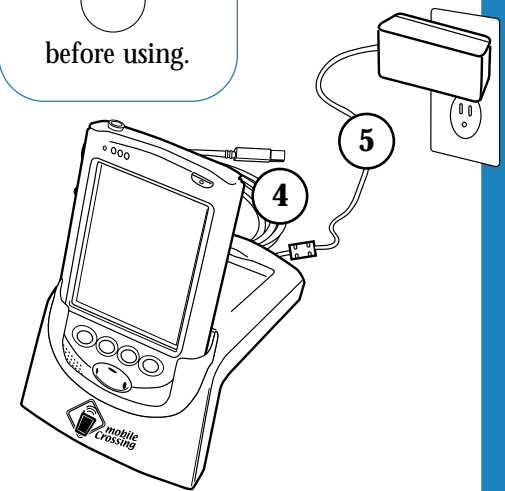


Insert cables  
(4) and (5).

Bottom View

Optional: Insert USB cable (4) for more features.  
Please see step (D) for more information.

! Charge  
Minimum 1 hour  
before using.



If you do not intend to use this unit with a personal computer then skip step D.

## C Calibration and Registration

After charging, turn on the  
WayPoint. (Using the power button  
on the front, top right of the pda).

Follow the screen directions to calibrate.

Tap here to set  
owner information.

Click the keyboard  
button in the lower right  
corner of the screen.

## D Optional Computer Setup

Insert the CD-ROM (8)  
into a drive on your  
computer.

Follow the instructions on  
the screen to install outlook  
and ActiveSync.

Insert the USB cable (4) into a  
USB slot on your PC.

### Travel Tip

When  
on the road, the  
travel adapter (5)  
turns the AC adapter  
(6) into a portable  
wall charger.

## E Installing your WayPoint in a Car

Connect cigarette lighter  
plug (11) to lighter socket.

Push  
to Navigate.

Squeeze  
BOTH sides  
to secure.

Turn knob  
to tighten.

Press button  
to release  
PDA from  
car mount.

